



McMunn & Yates
Building Supplies

NORLAND



Drawing is artist's conception only

NORLAND

Style: Bungalow

Dimensions: 54' x 30' / 26'

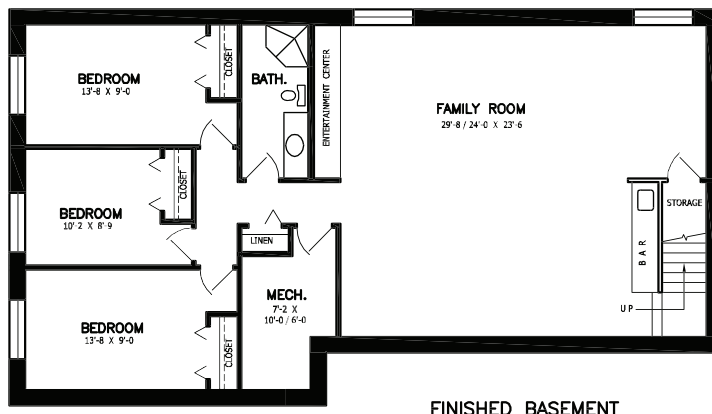
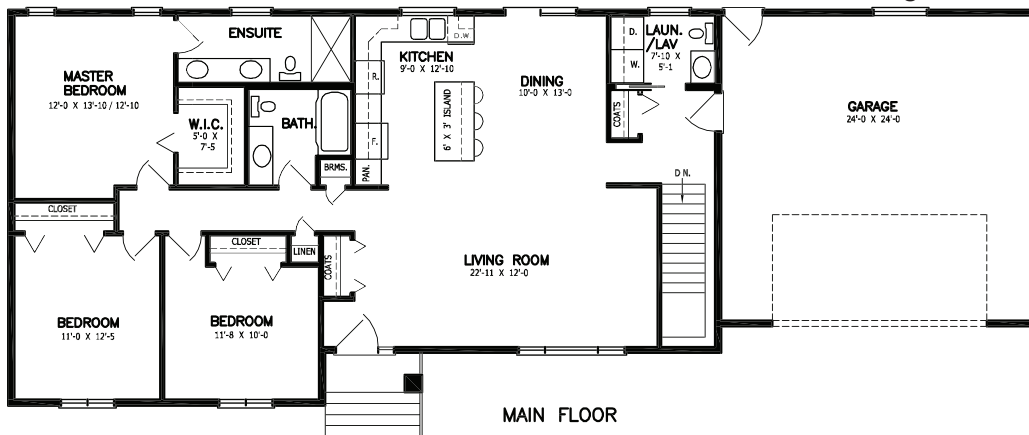
Main Floor: 1500 sqft

Bedrooms: 6

Bath: 3½

FEATURES

- Kitchen with island
- Main floor laundry
- Master bedroom with ensuite and walk-in closet
- Finished basement with 3 bedrooms and 1 bathroom
- Garage



CONTACT US TODAY
FOR MORE INFORMATION!



1.855.882.8426



packages@mcmunnandyates.com

View more floor plans online at mcmunnandyates.com/packages/homes-cottages