



McMunn & Yates
Building Supplies

OXFORD



Drawing is artist's conception only

OXFORD

Style: 2 Storey

Dimensions: 19x32

Main Floor: 608 sqft

Upper Floor: 631 sqft

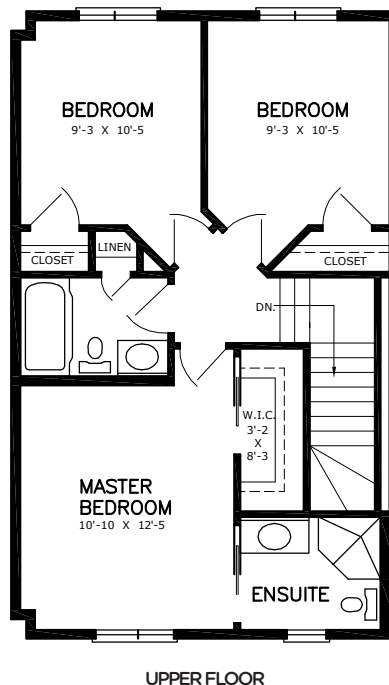
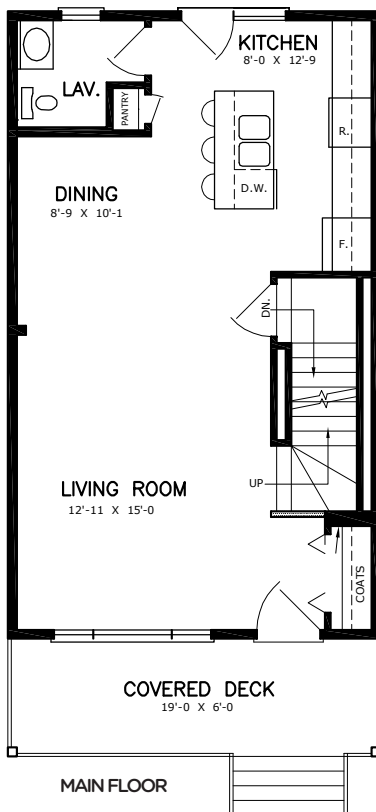
Total: 1,239 sqft

Bedrooms: 4

Bath: 3½

FEATURES

- Open concept
- Kitchen with island
- Master bedroom with ensuite and walk-in closet
- Covered front porch
- Finished basement with 1 bedroom, 1 bathroom, family room and laundry room



CONTACT US TODAY
FOR MORE INFORMATION!

☎ 1.855.882.8426

✉ packages@mcmunnandyates.com